

The Sonora Home Design

Shea Homes®

COTINO™

A STORYLIVING BY Disney™ COMMUNITY



Computer-generated image shown; preliminary home concept by Shea Homes, not yet built and subject to change. ©Disney

EXTERIOR: COTINO ASPIRON COLLECTION

3
BEDROOMS

3
BATHROOMS

1
1/2 BATHROOMS

2
GARAGE SPACES

1
STORIES

2,782
SQUARE FEET

Discover your creative oasis at *Cotino™*, the first *Storyliving by Disney™* community. Enjoy breathtaking mountain views, charming parks and a promenade around *Cotino™* Bay, the jewel of the community.

Cotino community welcomes you to experience life with the Disney touch—and make your next chapter the best one yet.

Highlights

- › Welcoming covered front porch entry
- › Stunning open-concept layout perfect for gatherings large or small
- › Spacious primary suite with well-proportioned bath and large walk-in closet
- › 2 secondary bedrooms with large baths
- › Well-appointed kitchen features large island and walk-in pantry
- › Flex space for multiple lifestyle uses
- › Great room opens to an expansive, covered outdoor living area
- › 2-car garage with oversized driveway
- › Side entry garage offers charming curb appeal

THE GRAND COLLECTION

Shea
HOMES
Live the difference.®

The Sonora Home Design

Shea Homes®

COTINO™

A STORYLIVING BY Disney™ COMMUNITY



Computer-generated image shown; preliminary home concept by Shea Homes, not yet built and subject to change. ©Disney

EXTERIOR: COTINO OASIS COLLECTION



Computer-generated image shown; preliminary home concept by Shea Homes, not yet built and subject to change. ©Disney

EXTERIOR: COTINO COACHELLA COLLECTION

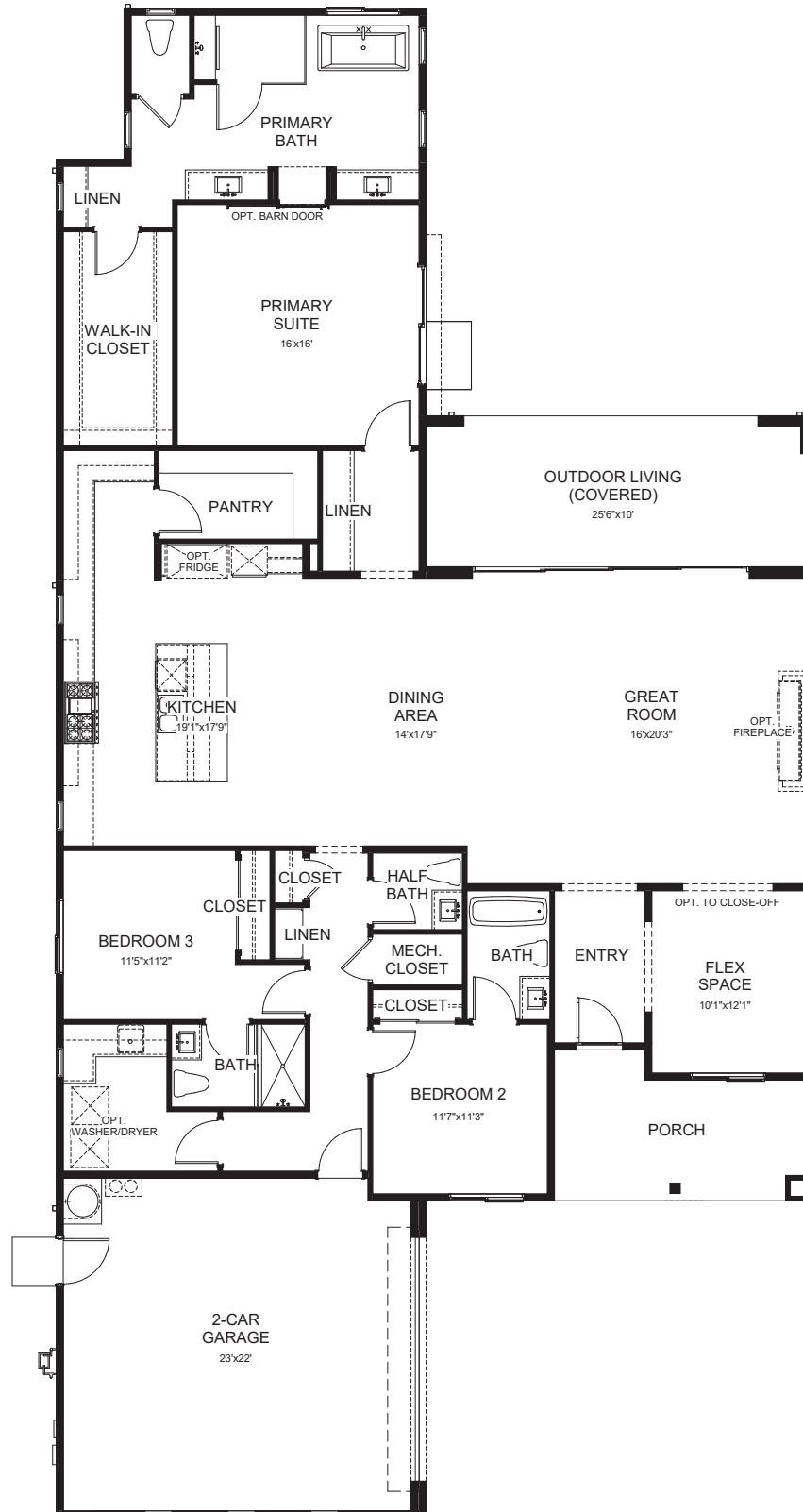
The Sonora Home Design

Shea Homes®

COTINO™

A STORYLIVING BY Disney™ COMMUNITY

FLOOR PLAN



Images are for illustration purposes only, not to scale and may not reflect the details or landscaping of the finished home. No guarantee is made that the features depicted or described will be built, or if built, will be in the same location or of the same type, size or nature depicted or described. Builder reserves the right to change or discontinue plans without notice. Dimensions and square footage are approximate. Features shown may not be included in the base home and may be options to be ordered separately at an additional cost. Windows and doors may vary per elevation. See sales representative for complete and current information.

The Sonora Home Design

Shea Homes®

COTINO™

A STORYLIVING BY Disney™ COMMUNITY

SITE PLAN



LEGEND

- COTTAGE COLLECTION
Home Sites Approx. 50'
- GRAND COLLECTION
Home Sites Approx. 60' & 70'
- ESTATE COLLECTION
Home Sites Approx. 90', 120' & 135'
- FUTURE CONDOMINIUMS
- LONGTABLE PARK RESIDENCES
Home Sites for Adults 55+

*Park accessible to residents of Longtable Park only

This material contains general information about future proposed community plans, which are subject to change or cancellation in part or whole, at any time without notice. No guarantee is made that the features and amenities depicted or described will be built, or if built, will be the same type, size, or nature as depicted or described. Builders and homes assigned to lots are based on current development plans which are subject to change without notice. Cotino™ community is for people of all ages with select home sites intended for occupancy by at least one person 55 years or older, except as otherwise permitted under limited circumstances. Residential community is Disney branded and managed, developed by DMB Development with homes built and sold by third-party builders. The parties developing, and building homes in, Storyliving by Disney™ communities are independently owned and operated. Shea Homes® is a participating builder in the Cotino community and uses Disney trademarks under a license agreement from Disney. Disney has not confirmed the accuracy of any of the statements or representations made about the homes and does not make any representations or warranties or guarantees whatsoever with respect to the homes. Shea Homes is not affiliated with Storyliving by Disney™ Realty or the developer of Cotino community. Shea Homes does not make any representations or warranties whatsoever with respect to Cotino community's development. Obtain the Property Report required by Federal law and read it before signing anything. No Federal agency has judged the merits or value, if any, of this property. This does not constitute an offer to sell, or a solicitation to buy, real estate to residents of any state, province or jurisdiction where prohibited by law, or where prior registration or filing of a disclosure statement is required, but has not yet been completed. In British Columbia, an offering for sale can only be made after filing a disclosure statement. Equal Housing Opportunity. Broker participation welcome. See StorylivingbyDisney.com for full details. Sales: [Storyliving by Disney Realty, CA DRE License No. 02194403]; Construction: SHALC GC, INC. (CSLB #1062050).

ALBERTA & BRITISH COLUMBIA RESIDENTS:

Cotino™ community preferred broker: Rennie & Associates Realty, 1-888-395-0004

Cotino community developer: ECRM Residential, Limited Partnership: 1-480-367-2600. 7600 East Doubletree Ranch Road, #250, Scottsdale, Arizona 85258-2136

©Disney

The Melodia Home Design

Shea Homes®

COTINO™

A STORYLIVING BY Disney™ COMMUNITY



EXTERIOR: COTINO OASIS COLLECTION

3
BEDROOMS

3
BATHROOMS

1
1/2 BATHROOMS

2
GARAGE SPACES

1
STORIES

2,925
SQUARE FEET

Discover your creative oasis at *Cotino*™, the first *Storyliving by Disney*™ community. Enjoy breathtaking mountain views, charming parks and a promenade around *Cotino*™ Bay, the jewel of the community.

Cotino community welcomes you to experience life with the Disney touch—and make your next chapter the best one yet.

Highlights

- › Striking front elevation with covered front porch and courtyard
- › Thoughtfully designed, open-concept floor plan
- › Elegant primary suite with expansive bath and walk-in closet
- › 2 secondary bedrooms with baths
- › Well-appointed kitchen features gourmet quality finishes, a large central island and walk-in pantry
- › Expansive outdoor living area accessible from the great room and primary suite
- › Flex space can be used for office, entertainment space or hobby studio

THE GRAND COLLECTION

Shea
HOMES
Live the difference.®

The Melodia Home Design

Shea Homes®

COTINO™

A STORYLIVING BY Disney™ COMMUNITY



Computer-generated image shown; preliminary home concept by Shea Homes, not yet built and subject to change. ©Disney

EXTERIOR: COTINO COACHELLA COLLECTION



Computer-generated image shown; preliminary home concept by Shea Homes, not yet built and subject to change. ©Disney

EXTERIOR: COTINO ASPIRON COLLECTION

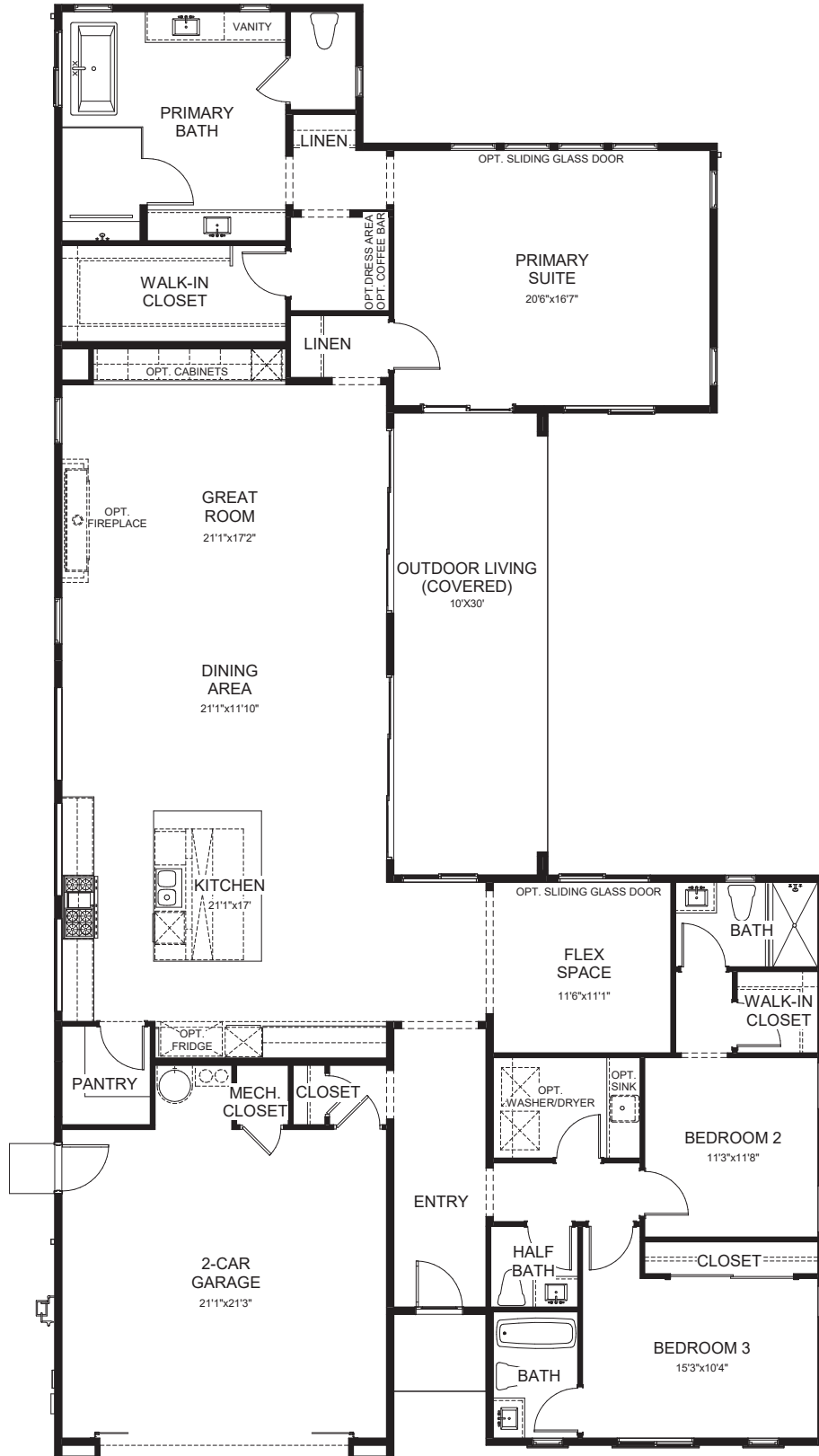
The Melodia Home Design

Shea Homes®

COTINO™

A STORYLIVING BY Disney™ COMMUNITY

FLOOR PLAN



Images are for illustration purposes only, not to scale and may not reflect the details or landscaping of the finished home. No guarantee is made that the features depicted or described will be built, or if built, will be in the same location or of the same type, size or nature depicted or described. Builder reserves the right to change or discontinue plans without notice. Dimensions and square footage are approximate. Features shown may not be included in the base home and may be options to be ordered separately at an additional cost. Windows and doors may vary per elevation. See sales representative for complete and current information.

The Melodia Home Design

Shea Homes®

COTINO™

A STORYLIVING BY Disney™ COMMUNITY

SITE PLAN



LEGEND

- COTTAGE COLLECTION
Home Sites Approx. 50'
- GRAND COLLECTION
Home Sites Approx. 60' & 70'
- ESTATE COLLECTION
Home Sites Approx. 90', 120' & 135'
- FUTURE CONDOMINIUMS
- LONGTABLE PARK RESIDENCES
Home Sites for Adults 55+

*Park accessible to residents of Longtable Park only

This material contains general information about future proposed community plans, which are subject to change or cancellation in part or whole, at any time without notice. No guarantee is made that the features and amenities depicted or described will be built, or if built, will be the same type, size, or nature as depicted or described. Builders and homes assigned to lots are based on current development plans which are subject to change without notice. Cotino™ community is for people of all ages with select home sites intended for occupancy by at least one person 55 years or older, except as otherwise permitted under limited circumstances. Residential community is Disney branded and managed, developed by DMB Development with homes built and sold by third-party builders. The parties developing, and building homes in, Storyliving by Disney™ communities are independently owned and operated. Shea Homes® is a participating builder in the Cotino community and uses Disney trademarks under a license agreement from Disney. Disney has not confirmed the accuracy of any of the statements or representations made about the homes and does not make any representations or warranties or guarantees whatsoever with respect to the homes. Shea Homes is not affiliated with Storyliving by Disney™ Realty or the developer of Cotino community. Shea Homes does not make any representations or warranties whatsoever with respect to Cotino community's development. Obtain the Property Report required by Federal law and read it before signing anything. No Federal agency has judged the merits or value, if any, of this property. This does not constitute an offer to sell, or a solicitation to buy, real estate to residents of any state, province or jurisdiction where prohibited by law, or where prior registration or filing of a disclosure statement is required, but has not yet been completed. In British Columbia, an offering for sale can only be made after filing a disclosure statement. Equal Housing Opportunity. Broker participation welcome. See StorylivingbyDisney.com for full details. Sales: [Storyliving by Disney Realty, CA DRE License No. 02194403]; Construction: SHALC GC, INC. (CSLB #1062050).

ALBERTA & BRITISH COLUMBIA RESIDENTS:

Cotino™ community preferred broker: Rennie & Associates Realty, 1-888-395-0004

Cotino community developer: ECRM Residential, Limited Partnership: 1-480-367-2600. 7600 East Doubletree Ranch Road, #250, Scottsdale, Arizona 85258-2136

©Disney

The Aerion Home Design

Shea Homes®

COTINO™

A STORYLIVING BY Disney™ COMMUNITY



Computer-generated image shown; preliminary home concept by Shea Homes, not yet built and subject to change. ©Disney

EXTERIOR: COTINO COACHELLA COLLECTION

3
BEDROOMS

3
BATHROOMS

1
1/2 BATHROOMS

2
GARAGE SPACES

2
STORIES

3,393
SQUARE FEET

Discover your creative oasis at *Cotino™*, the first *Storyliving by Disney™* community. Enjoy breathtaking mountain views, charming parks and a promenade around *Cotino™* Bay, the jewel of the community.

Cotino community welcomes you to experience life with the Disney touch—and make your next chapter the best one yet.

Highlights

- › Gorgeous entry with private front courtyard
- › Dramatic, two-story great room opens to the covered outdoor living area
- › Main-level primary suite with spacious bath, 2 walk-in closets, and private outdoor living
- › 2 secondary bedrooms with baths
- › Well-appointed kitchen featuring a large center island and walk-in pantry
- › 2nd floor flex space opens to covered deck
- › 1st floor flex space that can be used as an office, den or lifestyle space

THE GRAND COLLECTION

Shea
HOMES
Live the difference.®

The Aerion Home Design

Shea Homes®

COTINO™

A STORYLIVING BY Disney™ COMMUNITY



Computer-generated image shown; preliminary home concept by Shea Homes, not yet built and subject to change. ©Disney

EXTERIOR: COTINO AGRARIAN COLLECTION



Computer-generated image shown; preliminary home concept by Shea Homes, not yet built and subject to change. ©Disney

EXTERIOR: COTINO ASPRON COLLECTION

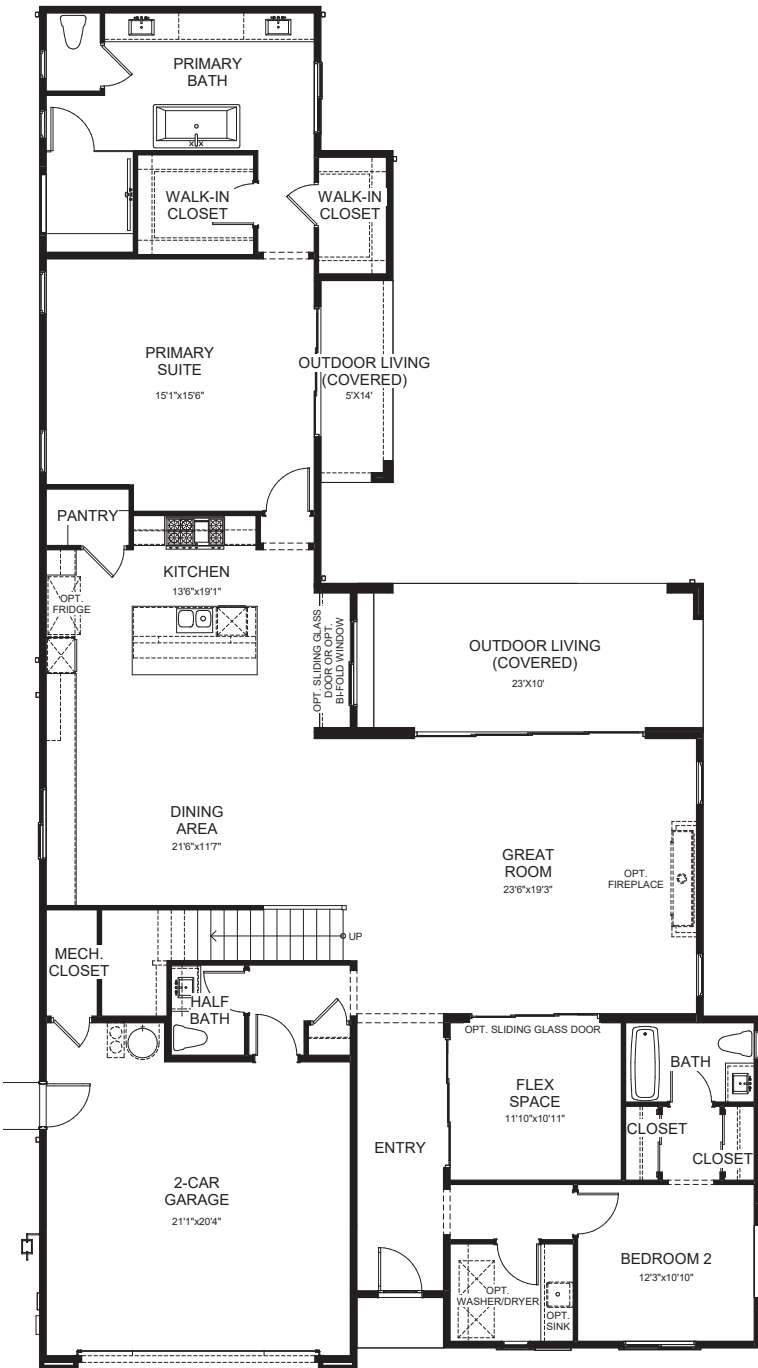
The Aerion Home Design

Shea Homes®

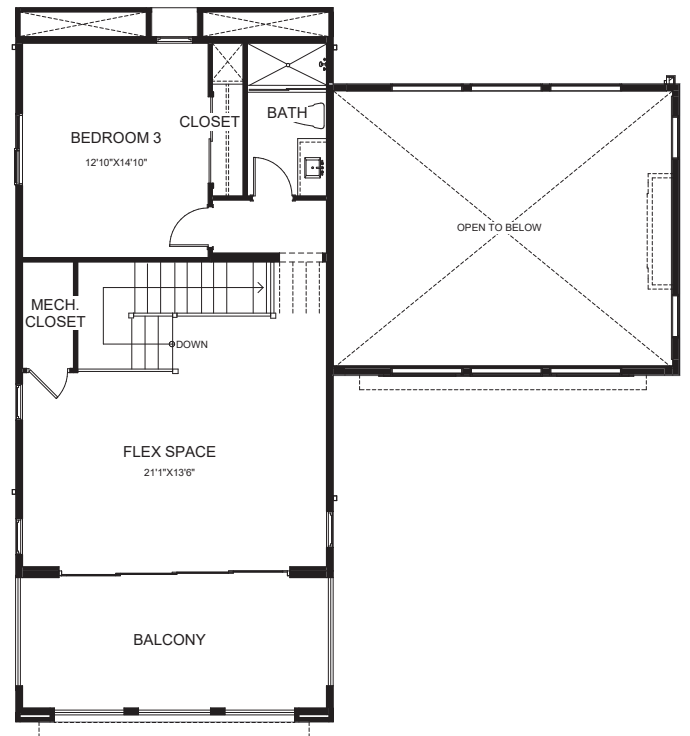
COTINO™

A STORYLIVING BY Disney™ COMMUNITY

FLOOR PLAN



FIRST FLOOR



SECOND FLOOR

Images are for illustration purposes only, not to scale and may not reflect the details or landscaping of the finished home. No guarantee is made that the features depicted or described will be built, or if built, will be in the same location or of the same type, size or nature depicted or described. Builder reserves the right to change or discontinue plans without notice. Dimensions and square footage are approximate. Features shown may not be included in the base home and may be options to be ordered separately at an additional cost. Windows and doors may vary per elevation. See sales representative for complete and current information.

The Aerion Home Design

Shea Homes®

COTINO™

A STORYLIVING BY Disney™ COMMUNITY

SITE PLAN



LEGEND

- COTTAGE COLLECTION
Home Sites Approx. 50'
- GRAND COLLECTION
Home Sites Approx. 60' & 70'
- ESTATE COLLECTION
Home Sites Approx. 90', 120' & 135'
- FUTURE CONDOMINIUMS
- LONGTABLE PARK RESIDENCES
Home Sites for Adults 55+

*Park accessible to residents of Longtable Park only

This material contains general information about future proposed community plans, which are subject to change or cancellation in part or whole, at any time without notice. No guarantee is made that the features and amenities depicted or described will be built, or if built, will be the same type, size, or nature as depicted or described. Builders and homes assigned to lots are based on current development plans which are subject to change without notice. Cotino™ community is for people of all ages with select home sites intended for occupancy by at least one person 55 years or older, except as otherwise permitted under limited circumstances. Residential community is Disney branded and managed, developed by DMB Development with homes built and sold by third-party builders. The parties developing, and building homes in, Storyliving by Disney™ communities are independently owned and operated. Shea Homes® is a participating builder in the Cotino community and uses Disney trademarks under a license agreement from Disney. Disney has not confirmed the accuracy of any of the statements or representations made about the homes and does not make any representations or warranties or guarantees whatsoever with respect to the homes. Shea Homes is not affiliated with Storyliving by Disney™ Realty or the developer of Cotino community. Shea Homes does not make any representations or warranties whatsoever with respect to Cotino community's development. Obtain the Property Report required by Federal law and read it before signing anything. No Federal agency has judged the merits or value, if any, of this property. This does not constitute an offer to sell, or a solicitation to buy, real estate to residents of any state, province or jurisdiction where prohibited by law, or where prior registration or filing of a disclosure statement is required, but has not yet been completed. In British Columbia, an offering for sale can only be made after filing a disclosure statement. Equal Housing Opportunity. Broker participation welcome. See StorylivingbyDisney.com for full details. Sales: [Storyliving by Disney Realty, CA DRE License No. 02194403]; Construction: SHALC GC, INC. (CSLB #1062050).

ALBERTA & BRITISH COLUMBIA RESIDENTS:

Cotino™ community preferred broker: Rennie & Associates Realty, 1-888-395-0004

Cotino community developer: ECRM Residential, Limited Partnership: 1-480-367-2600. 7600 East Doubletree Ranch Road, #250, Scottsdale, Arizona 85258-2136

©Disney

The Panorámica Home Design

Shea Homes®

COTINO™

A STORYLIVING BY Disney™ COMMUNITY



EXTERIOR: COTINO ASPIRON COLLECTION

3-4
BEDROOMS

3
BATHROOMS

1
1/2 BATHROOMS

2
GARAGE SPACES

2
STORIES

~3,714
SQUARE FEET

Discover your creative oasis at *Cotino™*, the first *Storyliving by Disney™* community. Enjoy breathtaking mountain views, charming parks and a promenade around *Cotino™* Bay, the jewel of the community.

Cotino community welcomes you to experience life with the Disney touch—and make your next chapter the best one yet.

Highlights

- › Stunning elevation with large, private courtyard
- › Coveted open floor plan with dramatic two-story great room
- › Elegant main-level primary suite with exceptional bath and 2 walk-in closets
- › 2 second-floor bedrooms, each with baths
- › Second-story flex space offers additional entertaining and connects to covered deck
- › Gourmet kitchen features an extra-large island and walk-in pantry
- › Inviting outdoor living area with covered patio
- › 1st and 2nd floor flex spaces offer multiple uses

THE GRAND COLLECTION

Shea
HOMES
Live the difference.®

The Panorámica Home Design

Shea Homes®

COTINO™

A STORYLIVING BY Disney™ COMMUNITY



Computer-generated image shown; preliminary home concept by Shea Homes, not yet built and subject to change. ©Disney

EXTERIOR: COTINO AGRARIAN COLLECTION



Computer-generated image shown; preliminary home concept by Shea Homes, not yet built and subject to change. ©Disney

EXTERIOR: COTINO COACHELLA COLLECTION

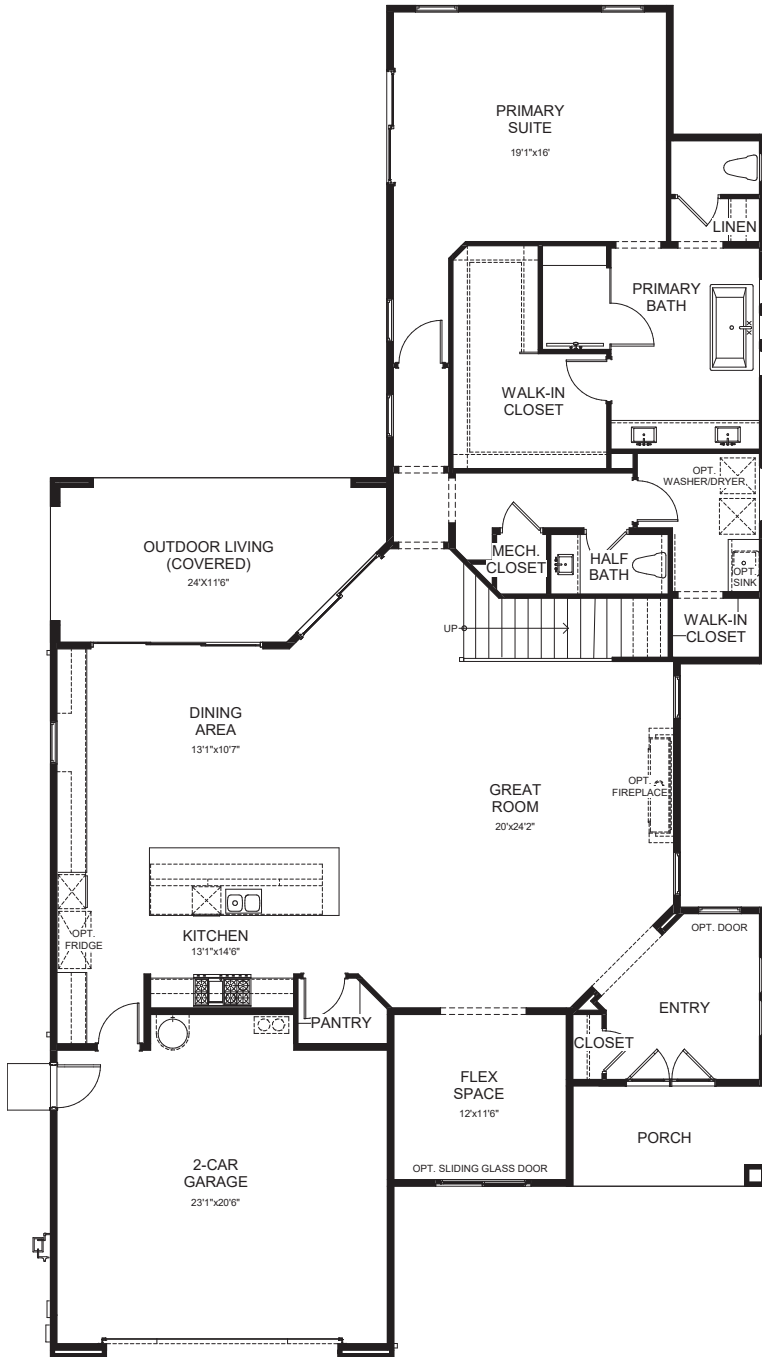
The Panorámica Home Design

Shea Homes®

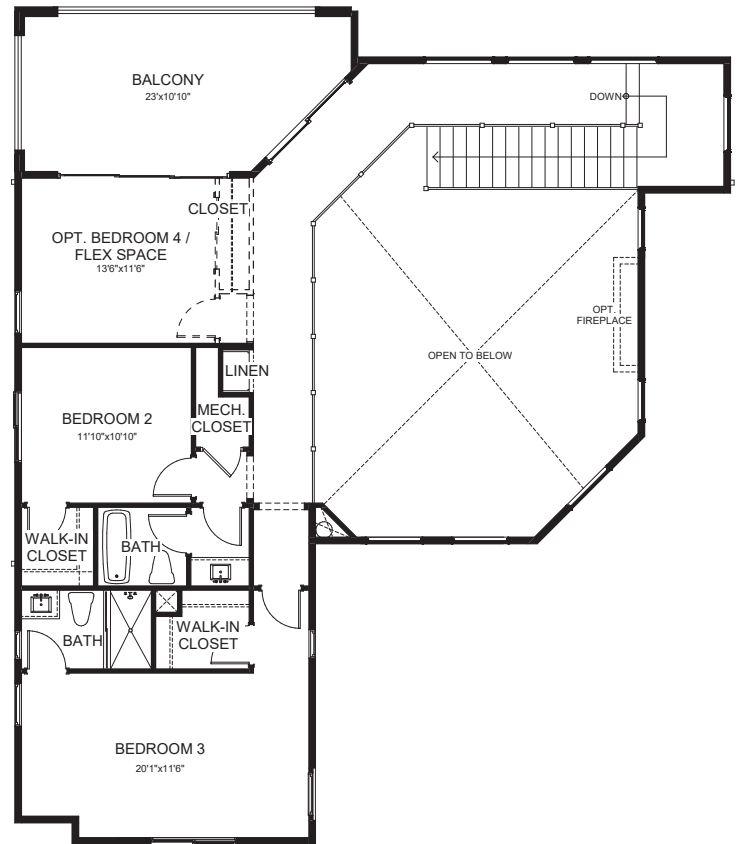
COTINO™

A STORYLIVING BY Disney™ COMMUNITY

FLOOR PLAN



FIRST FLOOR



SECOND FLOOR

Images are for illustration purposes only, not to scale and may not reflect the details or landscaping of the finished home. No guarantee is made that the features depicted or described will be built, or if built, will be in the same location or of the same type, size or nature depicted or described. Builder reserves the right to change or discontinue plans without notice. Dimensions and square footage are approximate. Features shown may not be included in the base home and may be options to be ordered separately at an additional cost. Windows and doors may vary per elevation. See sales representative for complete and current information.

The Panorámica Home Design

Shea Homes®

COTINO™

A STORYLIVING BY Disney™ COMMUNITY

SITE PLAN



LEGEND

- COTTAGE COLLECTION
Home Sites Approx. 50'
- GRAND COLLECTION
Home Sites Approx. 60' & 70'
- ESTATE COLLECTION
Home Sites Approx. 90', 120' & 135'
- FUTURE CONDOMINIUMS
- LONGTABLE PARK RESIDENCES
Home Sites for Adults 55+

*Park accessible to residents of Longtable Park only

This material contains general information about future proposed community plans, which are subject to change or cancellation in part or whole, at any time without notice. No guarantee is made that the features and amenities depicted or described will be built, or if built, will be the same type, size, or nature as depicted or described. Builders and homes assigned to lots are based on current development plans which are subject to change without notice. Cotino™ community is for people of all ages with select home sites intended for occupancy by at least one person 55 years or older, except as otherwise permitted under limited circumstances. Residential community is Disney branded and managed, developed by DMB Development with homes built and sold by third-party builders. The parties developing, and building homes in, Storyliving by Disney™ communities are independently owned and operated. Shea Homes® is a participating builder in the Cotino community and uses Disney trademarks under a license agreement from Disney. Disney has not confirmed the accuracy of any of the statements or representations made about the homes and does not make any representations or warranties or guarantees whatsoever with respect to the homes. Shea Homes is not affiliated with Storyliving by Disney™ Realty or the developer of Cotino community. Shea Homes does not make any representations or warranties whatsoever with respect to Cotino community's development. Obtain the Property Report required by Federal law and read it before signing anything. No Federal agency has judged the merits or value, if any, of this property. This does not constitute an offer to sell, or a solicitation to buy, real estate to residents of any state, province or jurisdiction where prohibited by law, or where prior registration or filing of a disclosure statement is required, but has not yet been completed. In British Columbia, an offering for sale can only be made after filing a disclosure statement. Equal Housing Opportunity. Broker participation welcome. See StorylivingbyDisney.com for full details. Sales: [Storyliving by Disney Realty, CA DRE License No. 02194403]; Construction: SHALC GC, INC. (CSLB #1062050).

ALBERTA & BRITISH COLUMBIA RESIDENTS:

Cotino™ community preferred broker: Rennie & Associates Realty, 1-888-395-0004

Cotino community developer: ECRM Residential, Limited Partnership: 1-480-367-2600. 7600 East Doubletree Ranch Road, #250, Scottsdale, Arizona 85258-2136

©Disney